

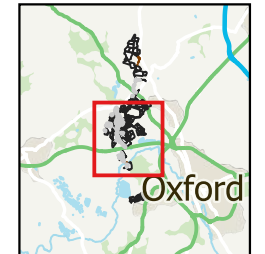
General Notes & Key

For this geophysical investigation, the fluxgate gradiometer array manufactured by Senys (Germany) was used. The sensors were mounted on a wheeled frame approximately 0.25- 1.0 m apart with positional data provided by an RTK GNSS.

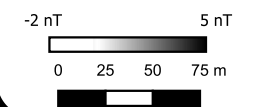
A small amount of post-acquisition processing is required to extract and visualise useful information from the acquired data. Once this is achieved successfully, the data are gridded and presented in this greyscale format.

Geophysical techniques are a measurement of material properties. Detecting and mapping the desired targets requires a measurable contrast between the target and the surrounding ground material. Interpretation of geophysical data should be carried out by qualified and experienced personnel but remains inherently subjective.

Overview map



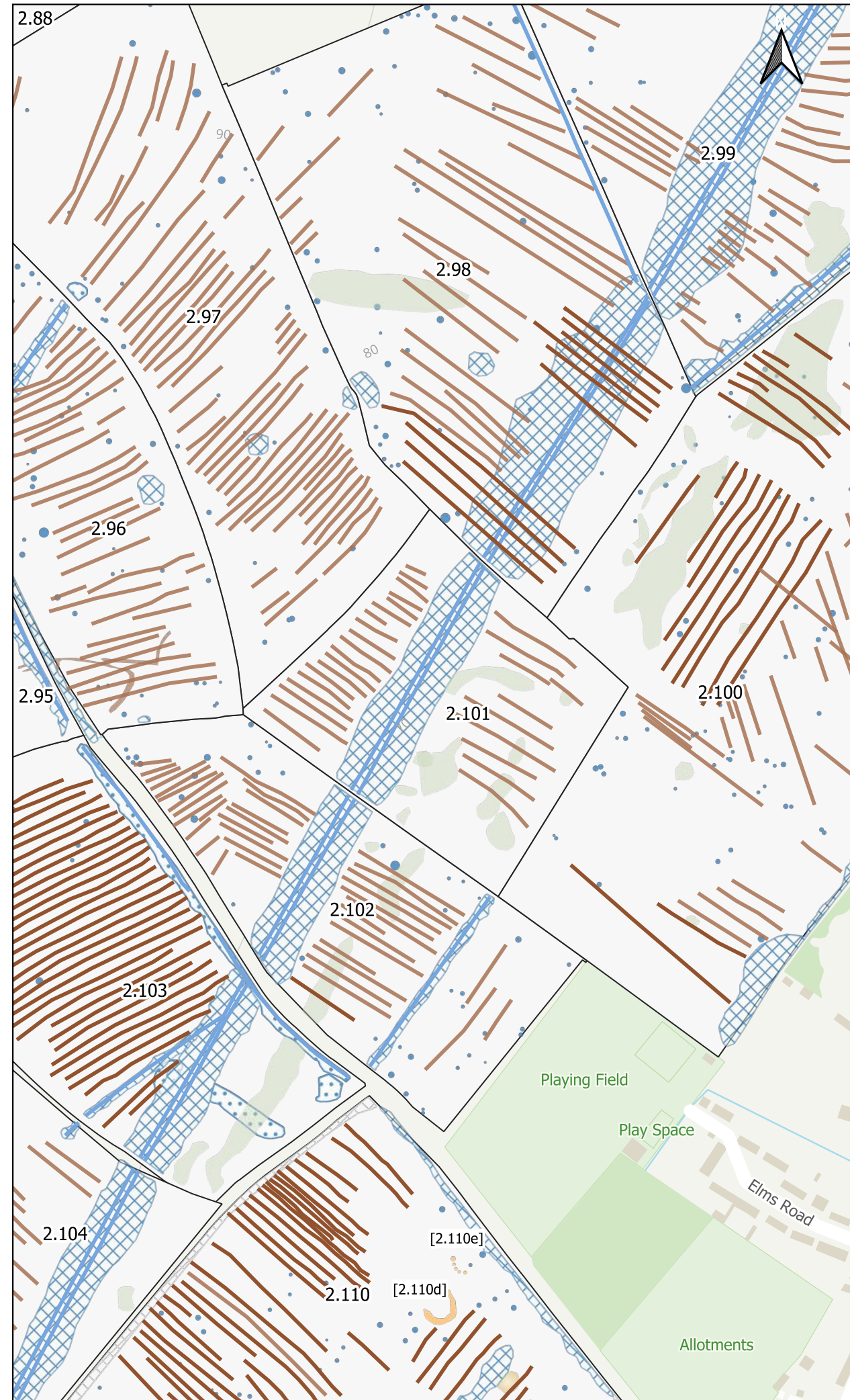
- Probable Archaeology
- Possible Archaeology
- Natural
- Agricultural (Weak)
- Ferrous Point
- Ferrous Spread
- Magnetic Interference
- Agricultural (Strong)
- Agricultural (Weak)
- Buried Utility



atlas geophysical
 Atlas Geophysical Ltd
 Garden House
 Heol Gledid
 Ystradgynlais
 Powys
 SA9 1LQ
 01639 874 104
 info@atlasgeo.co.uk

Project:
 AG1803 Botely West
Client:
 Photovolt Development Partners GmbH

Project: AG1803	Sheet: Field 2.100
Date: November 2024	
Scale: 1 : 4000 @A3	



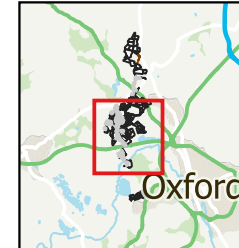
General Notes & Key

For this geophysical investigation, the fluxgate gradiometer array manufactured by Senoys (Germany) was used. The sensors were mounted on a wheeled frame approximately 0.25- 1.0 m apart with positional data provided by an RTK GNSS.

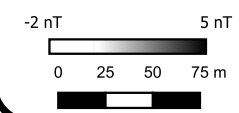
A small amount of post-acquisition processing is required to extract and visualise useful information from the acquired data. Once this is achieved successfully, the data are gridded and presented in this greyscale format.

Geophysical techniques are a measurement of material properties. Detecting and mapping the desired targets requires a measurable contrast between the target and the surrounding ground material. Interpretation of geophysical data should be carried out by qualified and experienced personnel but remains inherently subjective.

Overview map



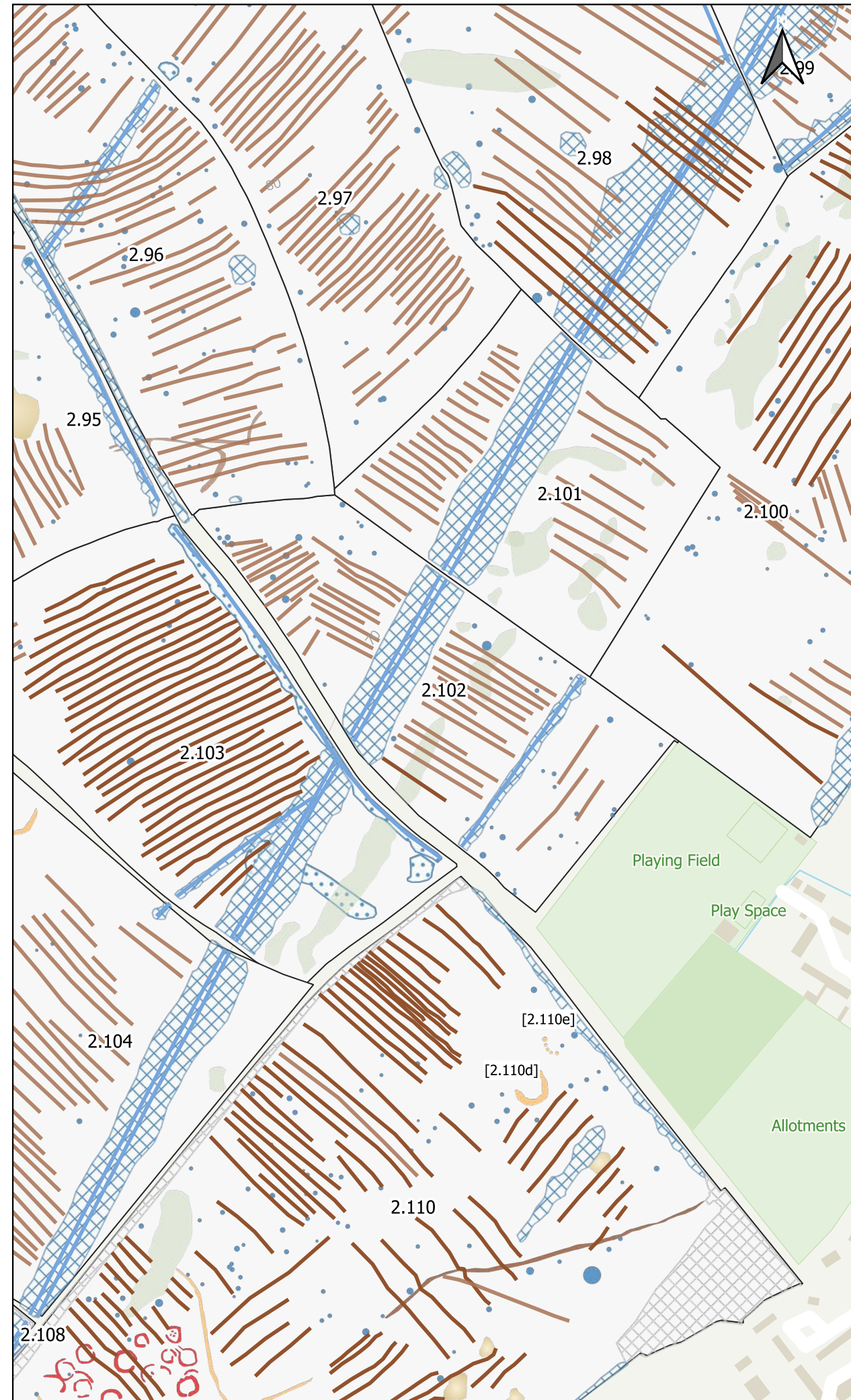
- Possible Archaeology
- Natural
- Agricultural (Weak)
- Ferrous Point
- Ferrous Spread
- Magnetic Interference
- Extraction
- Unable to Survey
- Agricultural (Strong)
- Agricultural (Weak)
- Buried Utility



atlas geophysical
 Atlas Geophysical Ltd
 Garden House
 Heol Giedd
 Ystradgynlais
 Powys
 SA9 1LQ
 01639 874 104
 info@atlasgeo.co.uk

Project:
 AG1803 Botely West
Client:
 Photovolta Development Partners GmbH

Project: AG1803	Sheet: Field 2.101
Date: November 2024	
Scale: 1 : 4000 @A3	



General Notes & Key

For this geophysical investigation, the fluxgate gradiometer array manufactured by Senosys (Germany) was used. The sensors were mounted on a wheeled frame approximately 0.25-1.0 m apart with positional data provided by an RTK GNSS.

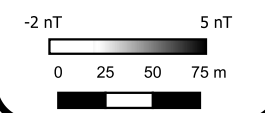
A small amount of post-acquisition processing is required to extract and visualise useful information from the acquired data. Once this is achieved successfully, the data are gridded and presented in this greyscale format.

Geophysical techniques are a measurement of material properties. Detecting and mapping the desired targets requires a measurable contrast between the target and the surrounding ground material. Interpretation of geophysical data should be carried out by qualified and experienced personnel but remains inherently subjective.

Overview map



- Probable Archaeology
- Possible Archaeology
- Natural
- Agricultural (Strong)
- Agricultural (Weak)
- Ferrous Point
- Ferrous Spread
- Magnetic Interference
- Extraction
- Unable to Survey
- Agricultural (Strong)
- Agricultural (Weak)
- Buried Utility

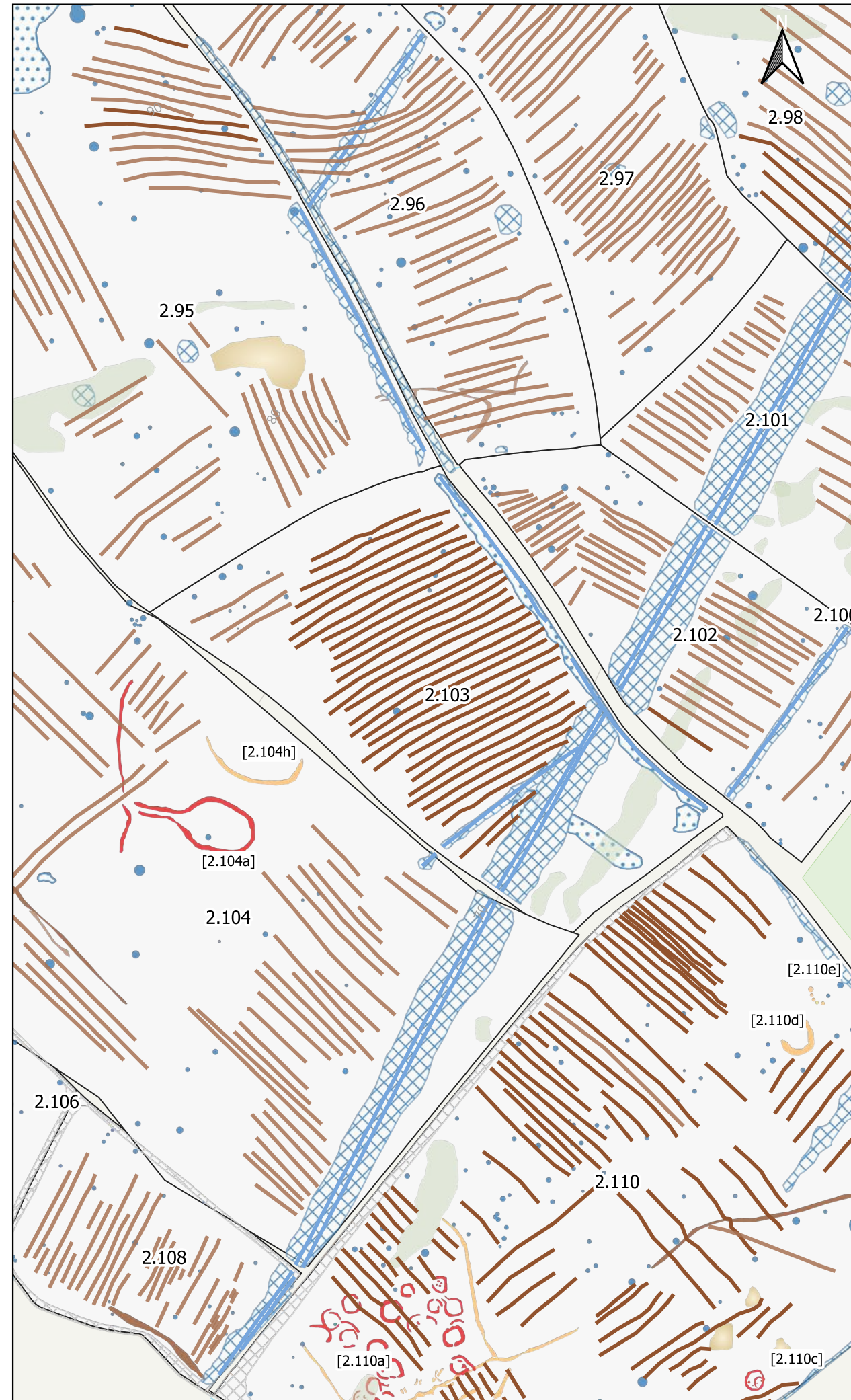


atlas geophysical
 Atlas Geophysical Ltd
 Garden House
 Heol Giedd
 Ystradgynlais
 Powys
 SA9 1LQ
 01639 874 104
 info@atlasgeo.co.uk

Project:
 AG1803 Botely West

Client:
 Photovolt Development Partners GmbH

Project: AG1803	Sheet: Field 2.102
Date: November 2024	
Scale: 1 : 4000 @A3	



General Notes & Key

For this geophysical investigation, the fluxgate gradiometer array manufactured by Senoys (Germany) was used. The sensors were mounted on a wheeled frame approximately 0.25-1.0 m apart with positional data provided by an RTK-GNSS.

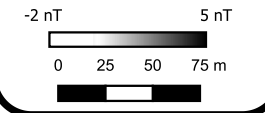
A small amount of post-acquisition processing is required to extract and visualise useful information from the acquired data. Once this is achieved successfully, the data are gridded and presented in this greyscale format.

Geophysical techniques are a measurement of material properties. Detecting and mapping the desired targets requires a measurable contrast between the target and the surrounding ground material. Interpretation of geophysical data should be carried out by qualified and experienced personnel but remains inherently subjective.

Overview map



- Probable Archaeology
- Possible Archaeology
- Natural
- Agricultural (Strong)
- Agricultural (Weak)
- Ferrous Point
- Ferrous Spread
- Magnetic Interference
- Extraction
- Unable to Survey
- Agricultural (Strong)
- Agricultural (Weak)
- Buried Utility

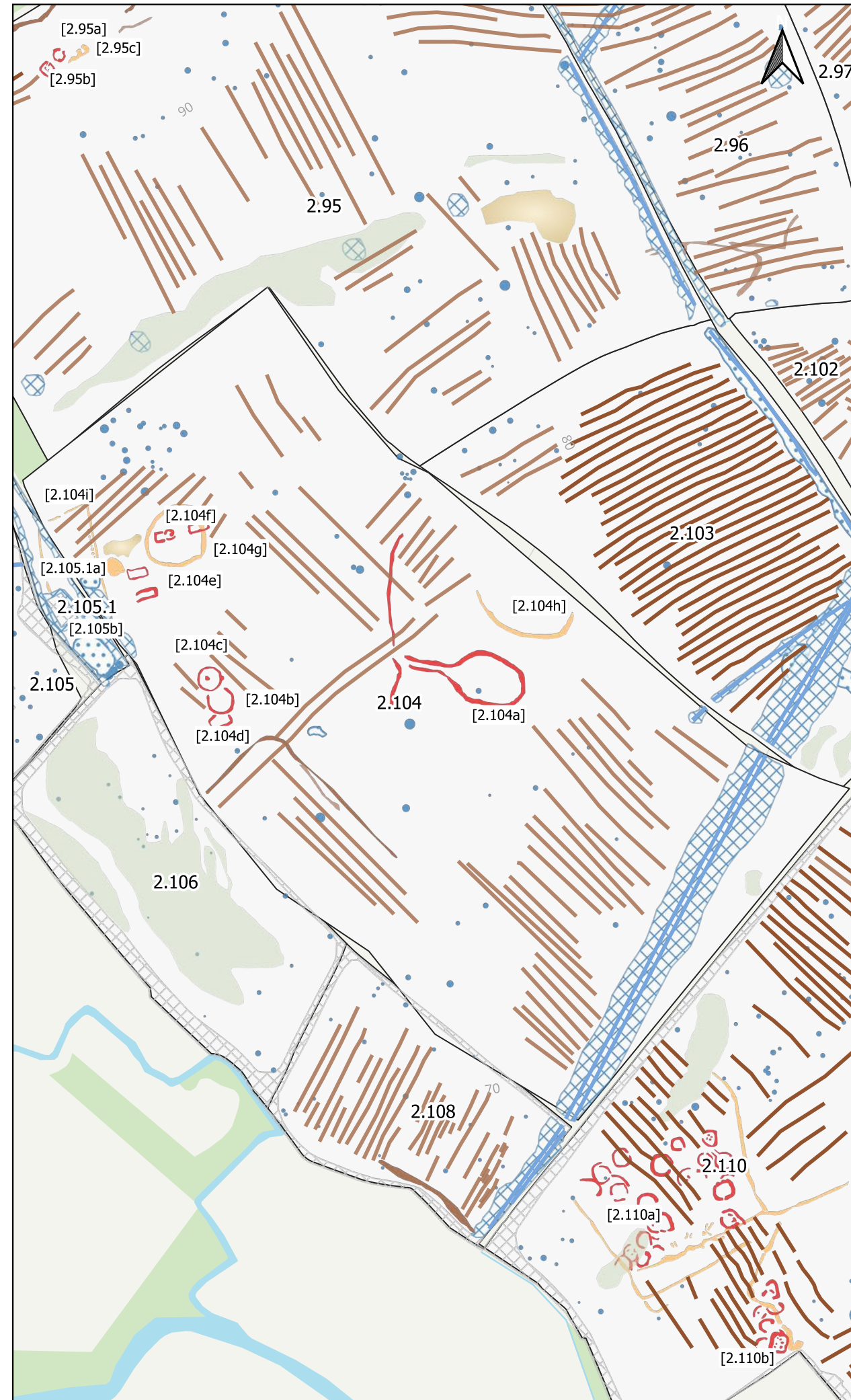


atlas geophysical
 Atlas Geophysical Ltd
 Garden House
 Heol Gledid
 Stradgynlais
 Powys
 SA9 1LQ
 01639 874 104
 info@atlasgeo.co.uk

Project:
 AG1803 Botely West

Client:
 Photovolt Development Partners GmbH

Project: AG1803	Sheet: Field 2.103
Date: November 2024	
Scale: 1 : 4000 @A3	



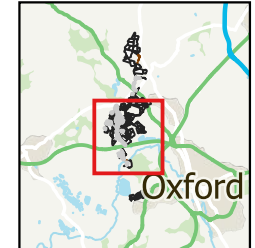
General Notes & Key

For this geophysical investigation, the fluigate gradiometer array manufactured by Senoys (Germany) was used. The sensors were mounted on a wheeled frame approximately 0.25- 1.0 m apart with positional data provided by an RTK GNSS.

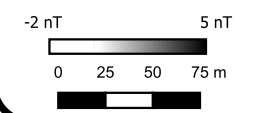
A small amount of post-acquisition processing is required to extract and visualise useful information from the acquired data. Once this is achieved successfully, the data are gridded and presented in this greyscales format.

Geophysical techniques are a measurement of material properties. Detecting and mapping the desired targets requires a measurable contrast between the target and the surrounding ground material. Interpretation of geophysical data should be carried out by qualified and experienced personnel but remains inherently subjective.

Overview map



- Probable Archaeology
- Possible Archaeology
- Natural
- Agricultural (Strong)
- Agricultural (Weak)
- Ferrous Point
- Ferrous Spread
- Magnetic Interference
- Extraction
- Unable to Survey
- Agricultural (Strong)
- Agricultural (Weak)
- Buried Utility

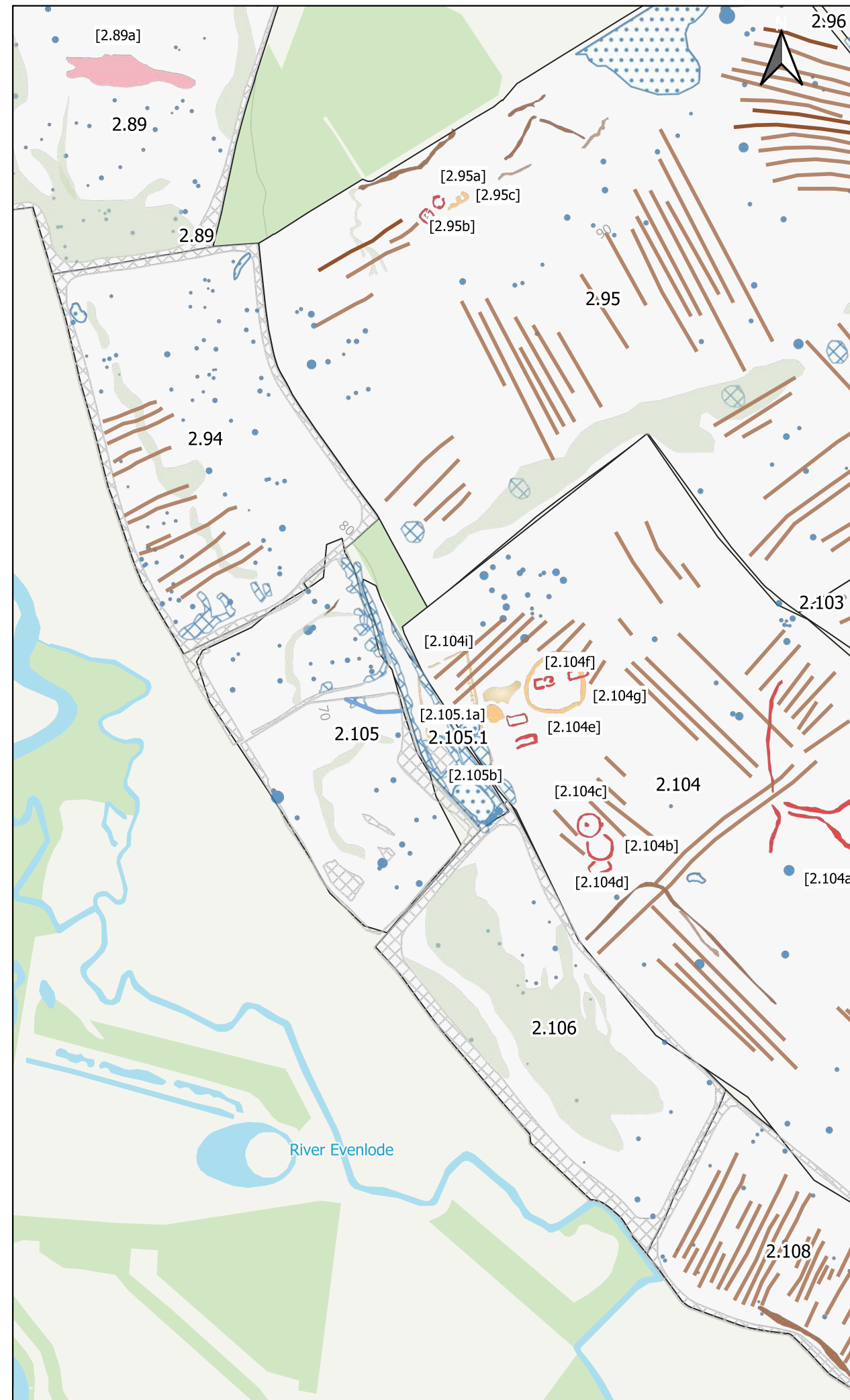


atlas geophysical
 Atlas Geophysical Ltd
 Garden House
 Heol Gledid
 Ystradgynlais
 Powys
 SA9 1LQ
 01639 874 104
 info@atlasgeo.co.uk

Project:
 AG1803 Botely West

Client:
 Photovolt Development Partners GmbH

Project: AG1803	Sheet: Field 2.104
Date: November 2024	
Scale: 1 : 4000 @A3	



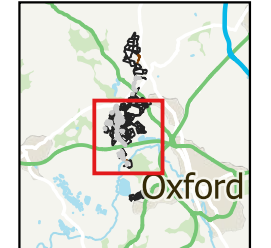
General Notes & Key

For this geophysical investigation, the fluigate gradiometer array manufactured by Senoys (Germany) was used. The sensors were mounted on a wheeled frame approximately 0.25- 1.0 m apart with positional data provided by an RTK GNSS.

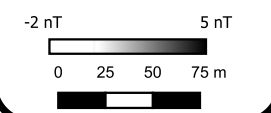
A small amount of post-acquisition processing is required to extract and visualise useful information from the acquired data. Once this is achieved successfully, the data are gridded and presented in this greyscale format.

Geophysical techniques are a measurement of material properties. Detecting and mapping the desired targets requires a measurable contrast between the target and the surrounding ground material. Interpretation of geophysical data should be carried out by qualified and experienced personnel but remains inherently subjective.

Overview map



- Probable Archaeology
- Possible Archaeology
- Natural
- Agricultural (Strong)
- Agricultural (Weak)
- Uncertain
- Ferrous Point
- Ferrous Spread
- ⊗ Magnetic Interference
- Extraction
- Unable to Survey
- Agricultural (Strong)
- Agricultural (Weak)
- Buried Utility

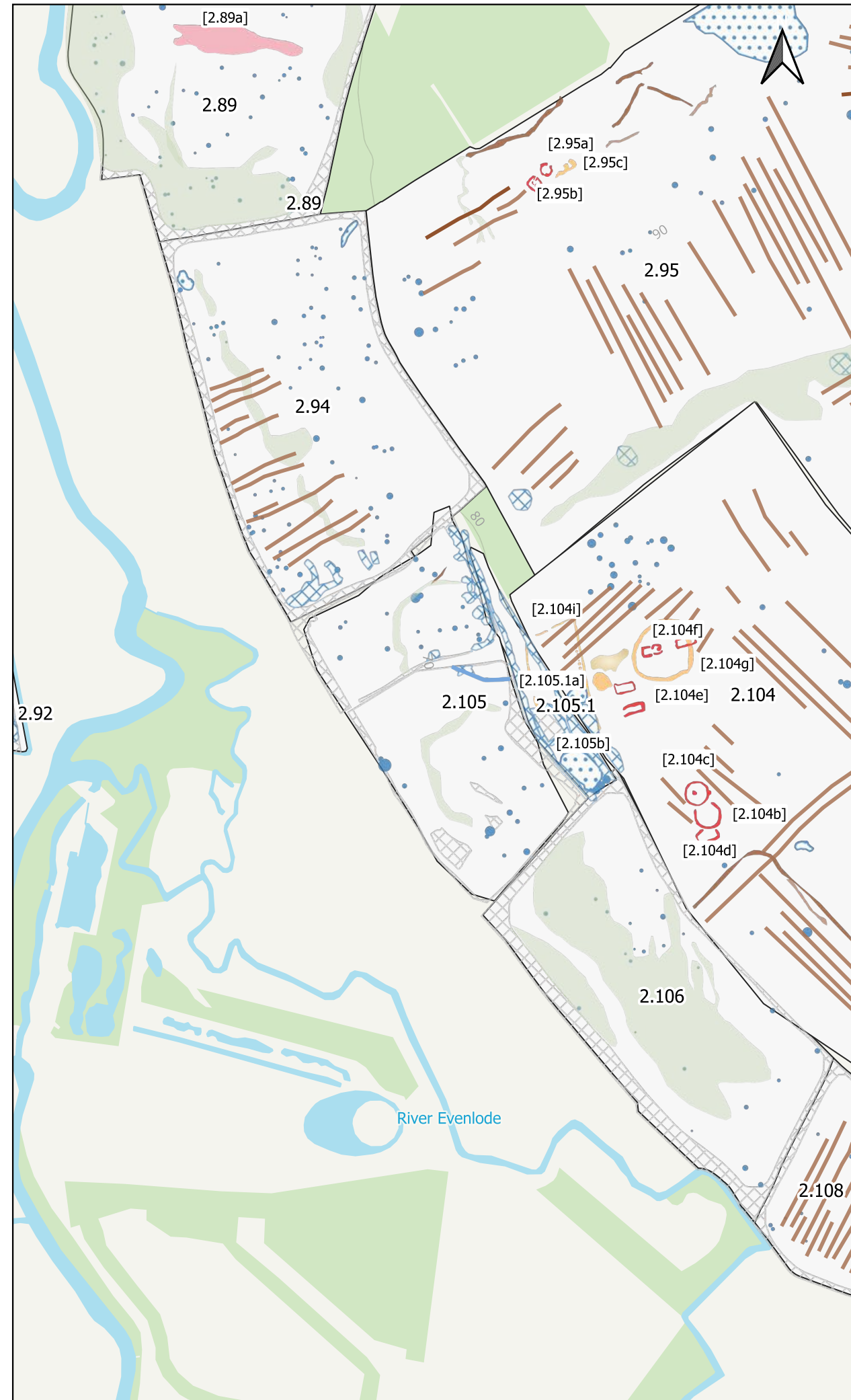


atlas geophysical
 Atlas Geophysical Ltd
 Garden House
 Heol Gledid
 Y Stradgynlais
 Powys
 SA9 1LQ
 01639 874 104
 info@atlasgeo.co.uk

Project:
 AG1803 Botely West

Client:
 Photovolt Development Partners GmbH

Project: AG1803	Sheet: Field 2.105.1
Date: November 2024	
Scale: 1 : 4000 @A3	



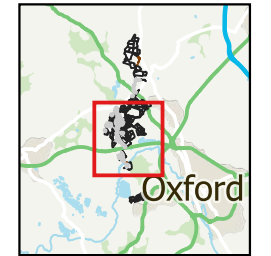
General Notes & Key

For this geophysical investigation, the fluxgate gradiometer array manufactured by Senoys (Germany) was used. The sensors were mounted on a wheeled frame approximately 0.25- 1.0 m apart with positional data provided by an RTK GNSS.

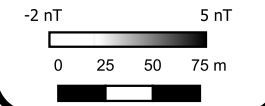
A small amount of post-acquisition processing is required to extract and visualise useful information from the acquired data. Once this is achieved successfully, the data are gridded and presented in this greyscale format.

Geophysical techniques are a measurement of material properties. Detecting and mapping the desired targets requires a measurable contrast between the target and the surrounding ground material. Interpretation of geophysical data should be carried out by qualified and experienced personnel but remains inherently subjective.

Overview map



- Probable Archaeology
- Possible Archaeology
- Natural
- Agricultural (Strong)
- Agricultural (Weak)
- Uncertain
- Ferrous Point
- Ferrous Spread
- ⊗ Magnetic Interference
- Extraction
- Unable to Survey
- Agricultural (Strong)
- Agricultural (Weak)
- Buried Utility

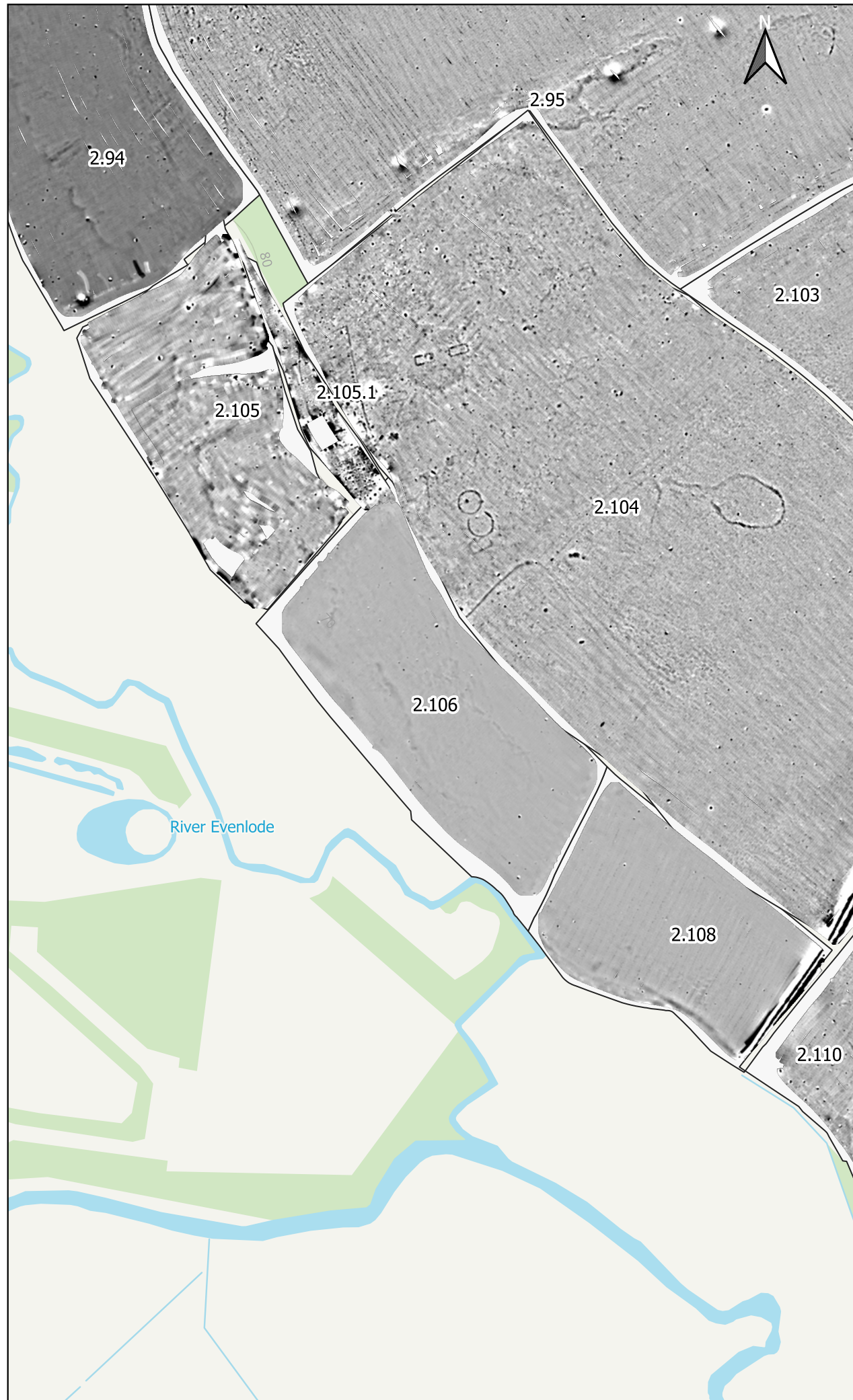


atlas geophysical
 Atlas Geophysical Ltd
 Garden House
 Heol Giedd
 Stradgynlais
 Powys
 SA9 1LQ
 01639 874 104
 info@atlasgeo.co.uk

Project:
 AG1803 Botely West

Client:
 Photovoltaic Development Partners GmbH

Project: AG1803	Sheet: Field 2.105
Date: November 2024	
Scale: 1 : 4000 @A3	



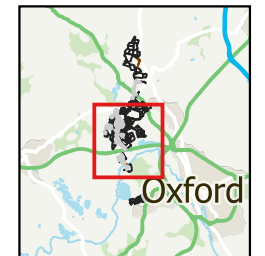
General Notes & Key

For this geophysical investigation, the fluxgate gradiometer array manufactured by Senoys (Germany) was used. The sensors were mounted on a wheeled frame approximately 0.25- 1.0 m apart with positional data provided by an RTK GNSS.

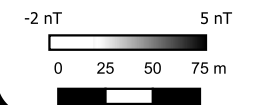
A small amount of post-acquisition processing is required to extract and visualise useful information from the acquired data. Once this is achieved successfully, the data are gridded and presented in this greyscale format.

Geophysical techniques are a measurement of material properties. Detecting and mapping the desired targets requires a measurable contrast between the target and the surrounding ground material. Interpretation of geophysical data should be carried out by qualified and experienced personnel but remains inherently subjective.

Overview map



- Probable Archaeology
- Possible Archaeology
- Natural
- Agricultural (Strong)
- Agricultural (Weak)
- Ferrous Point
- Ferrous Spread
- Magnetic Interference
- Extraction
- Unable to Survey
- ▨ Agricultural (Strong)
- ▨ Agricultural (Weak)
- Buried Utility

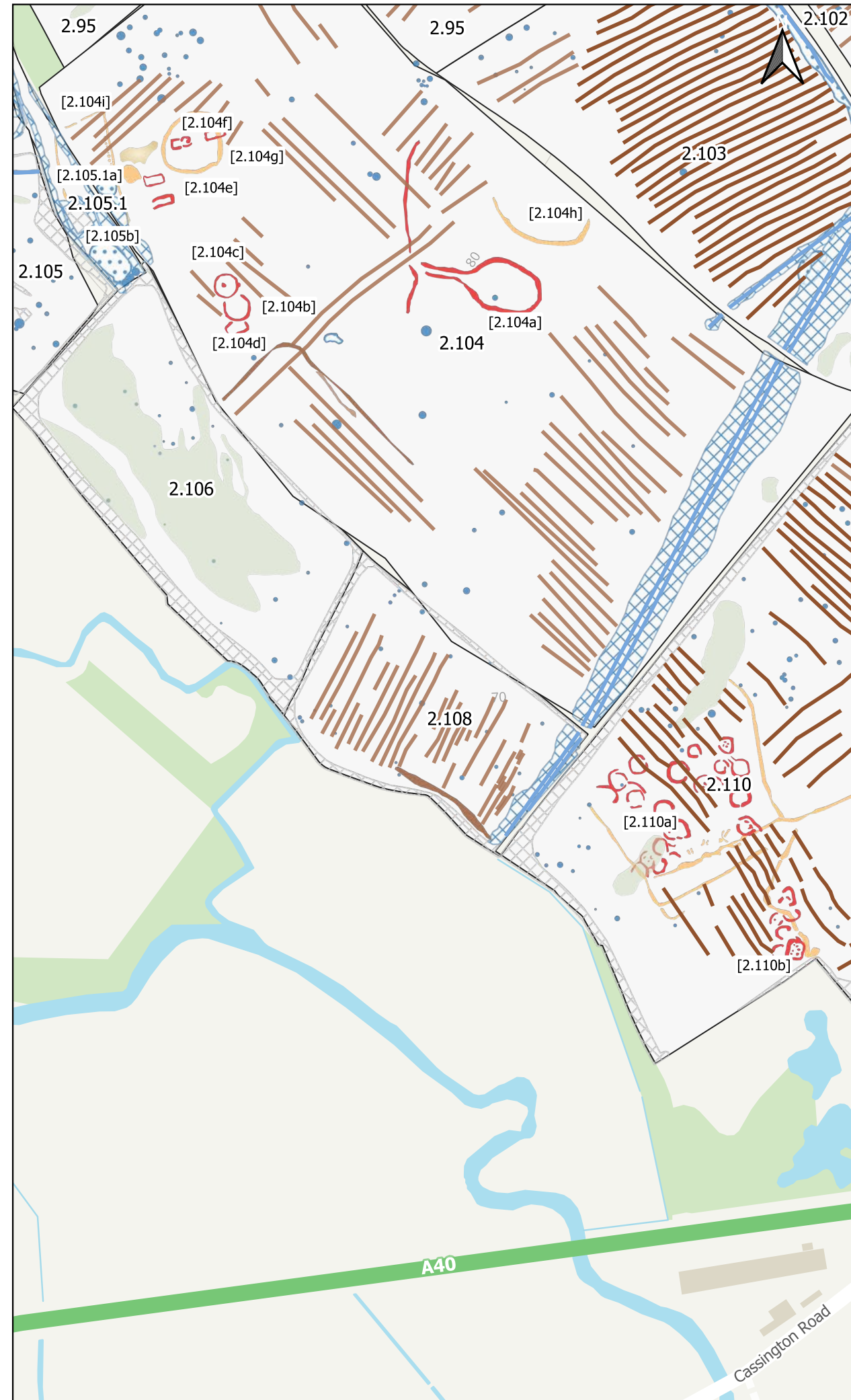
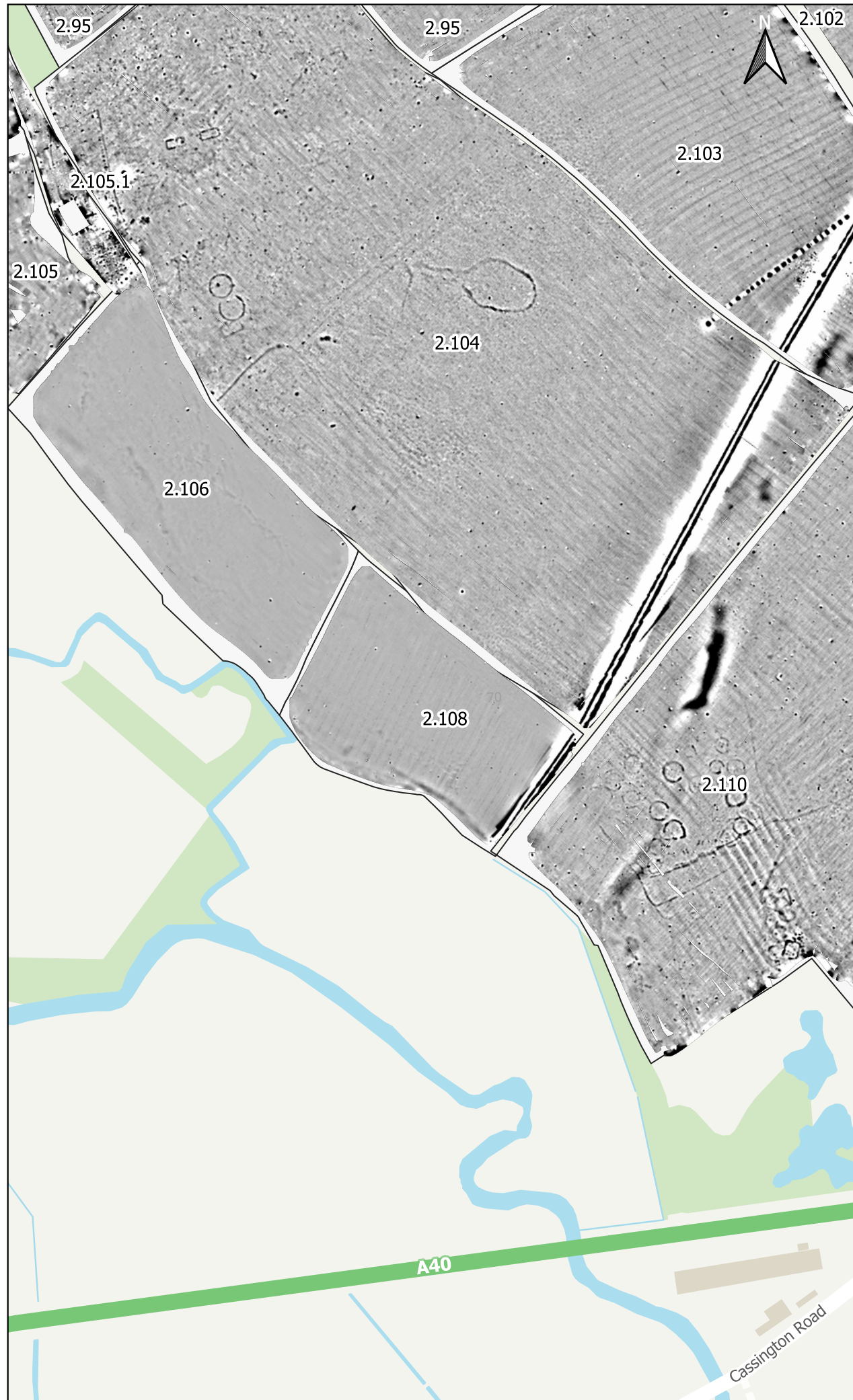


atlas geophysical
 Atlas Geophysical Ltd
 Garden House
 Heol Gledid
 1 Stradgynlais
 Powys
 SA9 1LQ
 01639 874 104
 info@atlasgeo.co.uk

Project:
 AG1803 Botely West

Client:
 Photovolt Development Partners GmbH

Project: AG1803	Sheet: Field 2.106
Date: November 2024	
Scale: 1 : 4000 @A3	



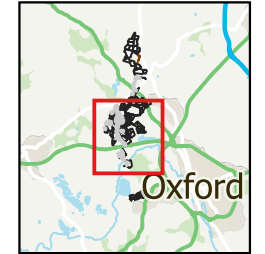
General Notes & Key

For this geophysical investigation, the fluxgate gradiometer array manufactured by Senoys (Germany) was used. The sensors were mounted on a wheeled frame approximately 0.25- 1.0 m apart with positional data provided by an RTK GNSS.

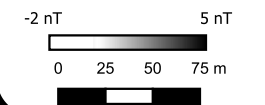
A small amount of post-acquisition processing is required to extract and visualise useful information from the acquired data. Once this is achieved successfully, the data are gridded and presented in this greyscale format.

Geophysical techniques are a measurement of material properties. Detecting and mapping the desired targets requires a measurable contrast between the target and the surrounding ground material. Interpretation of geophysical data should be carried out by qualified and experienced personnel but remains inherently subjective.

Overview map



- Probable Archaeology
- Possible Archaeology
- Natural
- Agricultural (Strong)
- Agricultural (Weak)
- Ferrous Point
- Ferrous Spread
- Magnetic Interference
- Extraction
- Unable to Survey
- ▬ Agricultural (Strong)
- ▬ Agricultural (Weak)
- ▬ Buried Utility

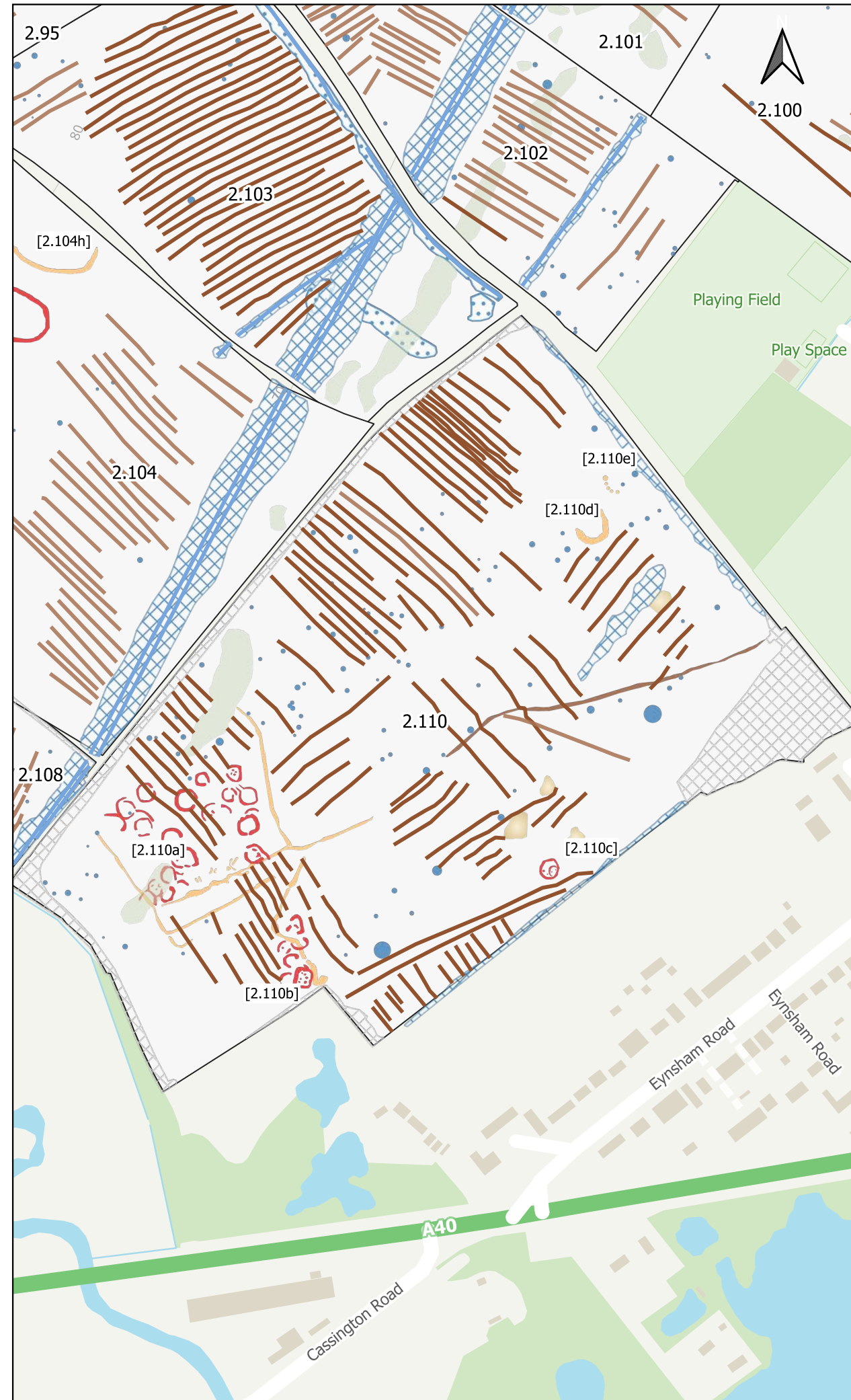


atlas geophysical
 Atlas Geophysical Ltd
 Garden House
 Heol Gledid
 Ystradgynlais
 Powys
 SA9 1LQ
 01639 874 104
 info@atlasgeo.co.uk

Project:
 AG1803 Botely West

Client:
 Photovoltaic Development Partners GmbH

Project: AG1803	Sheet: Field 2.108
Date: November 2024	
Scale: 1 : 4000 @A3	



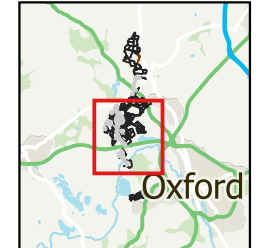
General Notes & Key

For this geophysical investigation, the fluxgate gradiometer array manufactured by Senysys (Germany) was used. The sensors were mounted on a wheeled frame approximately 0.25- 1.0 m apart with positional data provided by an RTK GNSS.

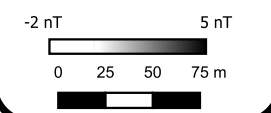
A small amount of post-acquisition processing is required to extract and visualise useful information from the acquired data. Once this is achieved successfully, the data are gridded and presented in this greyscale format.

Geophysical techniques are a measurement of material properties. Detecting and mapping the desired targets requires a measurable contrast between the target and the surrounding ground material. Interpretation of geophysical data should be carried out by qualified and experienced personnel but remains inherently subjective.

Overview map



- Probable Archaeology
- Possible Archaeology
- Natural
- Agricultural (Strong)
- Ferrous Point
- Ferrous Spread
- Magnetic Interference
- Extraction
- Unable to Survey
- Agricultural (Strong)
- Agricultural (Weak)
- Buried Utility



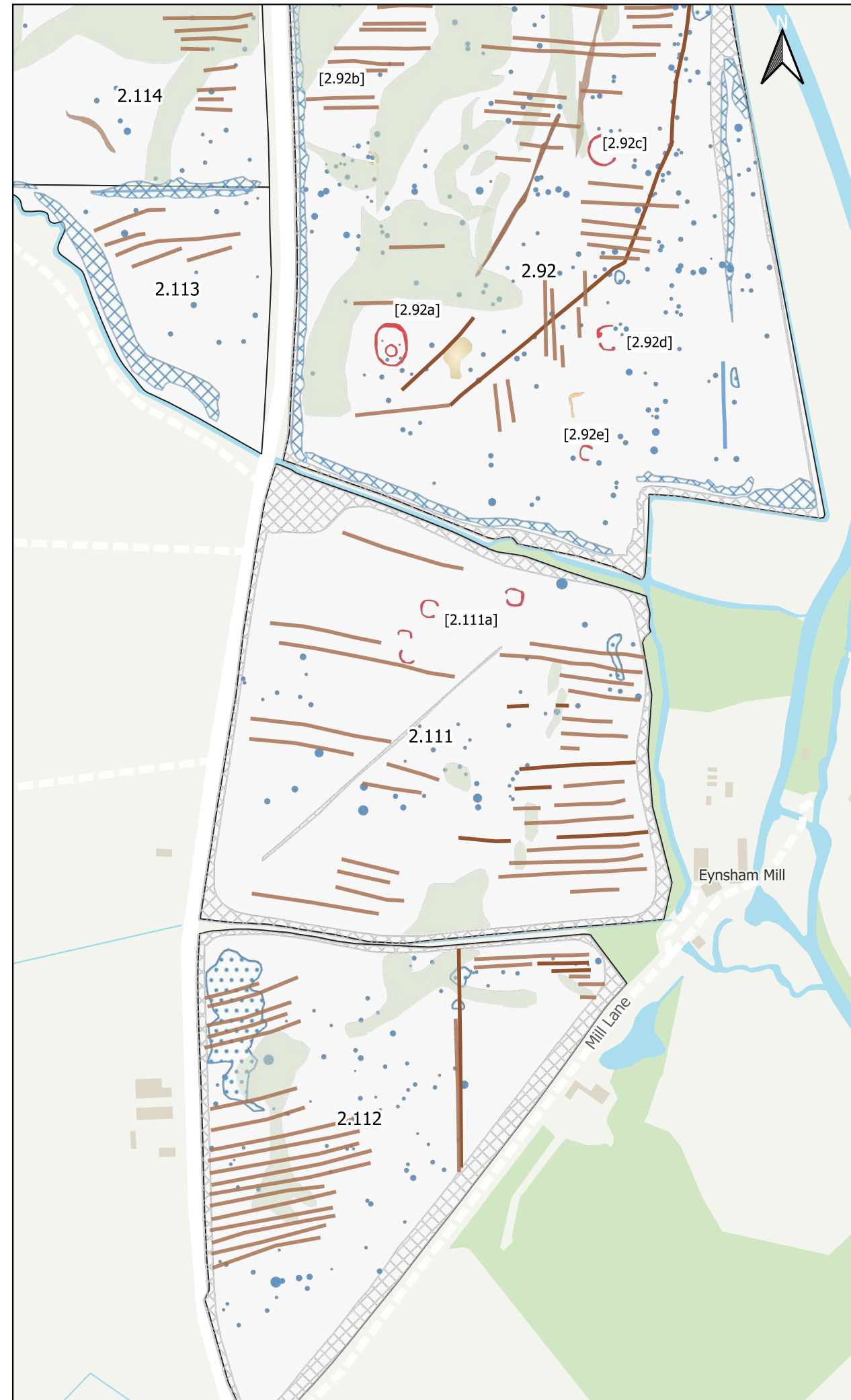
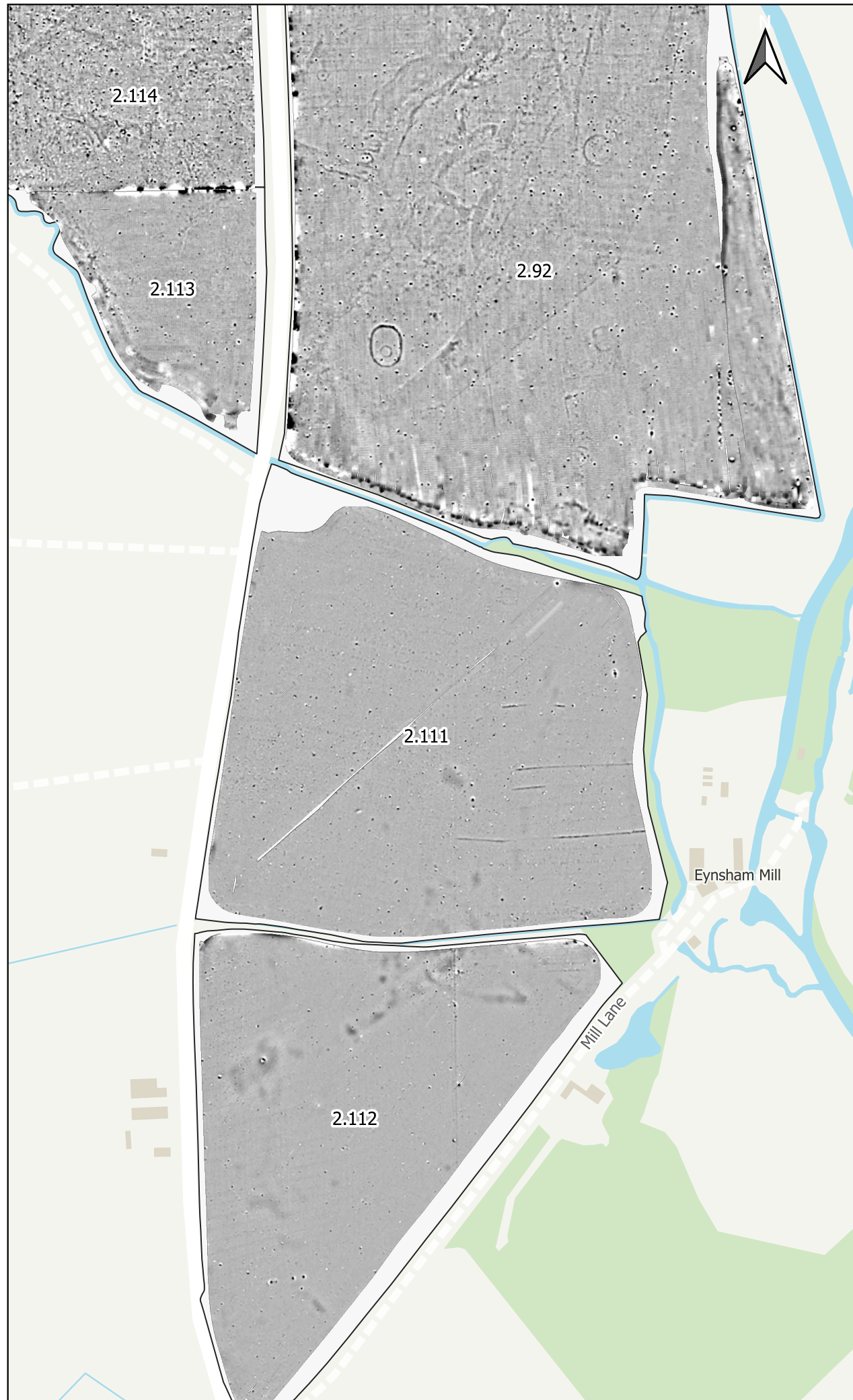
atlas
geophysical

Atlas Geophysical Ltd
Garden House
Heol Gledid
1 Stradgynlais
Powys
SA9 1LQ
01639 874 104
info@atlasgeo.co.uk

Project:
AG1803 Botely West

Client:
Photovolt Development Partners GmbH

Project: AG1803	Sheet: Field 2.110
Date: November 2024	
Scale: 1 : 4000 @A3	



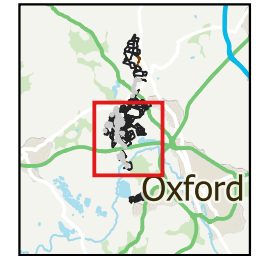
General Notes & Key

For this geophysical investigation, the fluxgate gradiometer array manufactured by Senoys (Germany) was used. The sensors were mounted on a wheeled frame approximately 0.25- 1.0 m apart with positional data provided by an RTK GNSS.

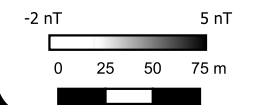
A small amount of post-acquisition processing is required to extract and visualise useful information from the acquired data. Once this is achieved successfully, the data are gridded and presented in this greyscale format.

Geophysical techniques are a measurement of material properties. Detecting and mapping the desired targets requires a measurable contrast between the target and the surrounding ground material. Interpretation of geophysical data should be carried out by qualified and experienced personnel but remains inherently subjective.

Overview map



- Probable Archaeology
- Possible Archaeology
- Natural
- Agricultural (Strong)
- Agricultural (Weak)
- Ferrous Point
- Ferrous Spread
- Magnetic Interference
- Extraction
- Unable to Survey
- Agricultural (Strong)
- Agricultural (Weak)
- Buried Utility

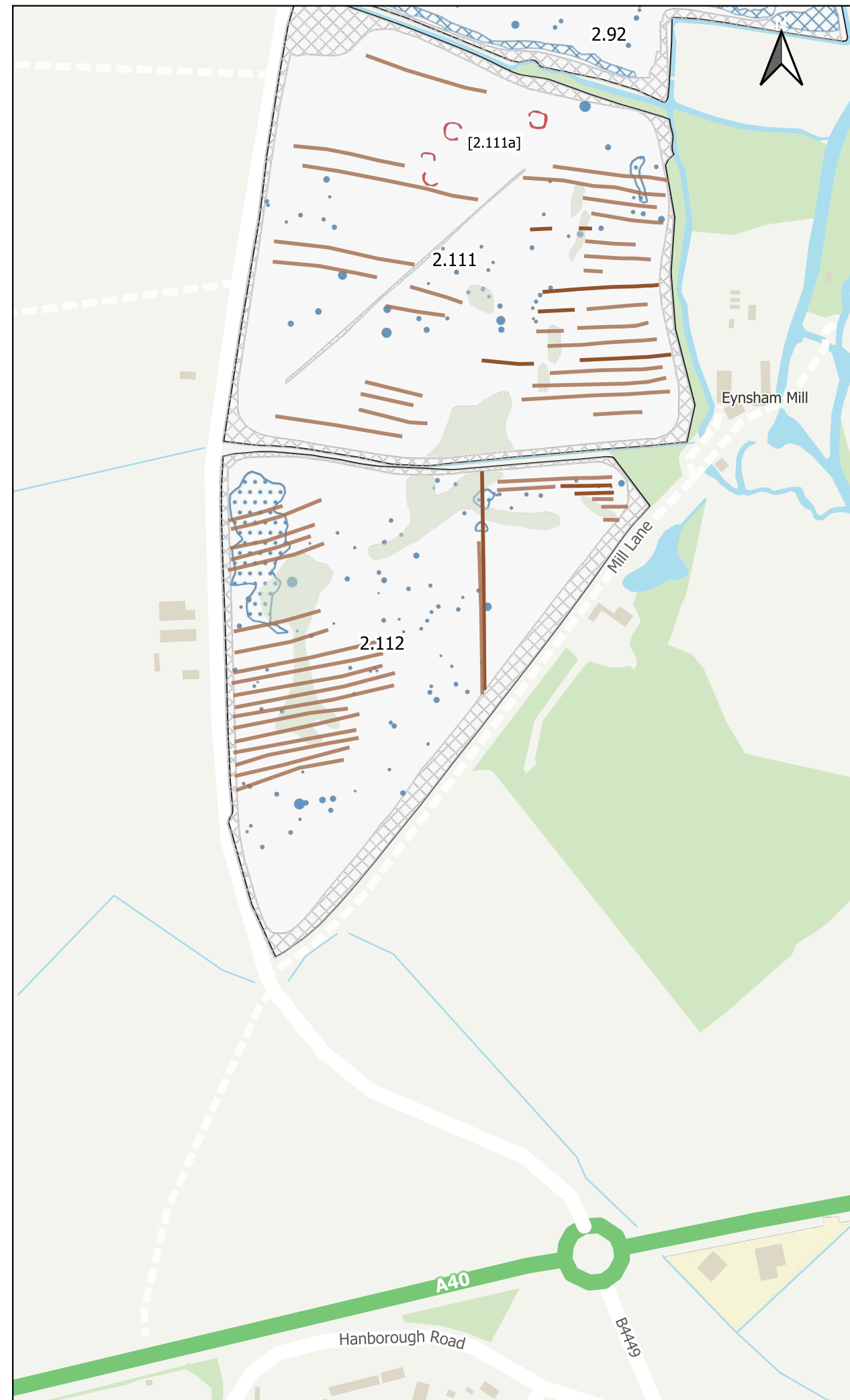
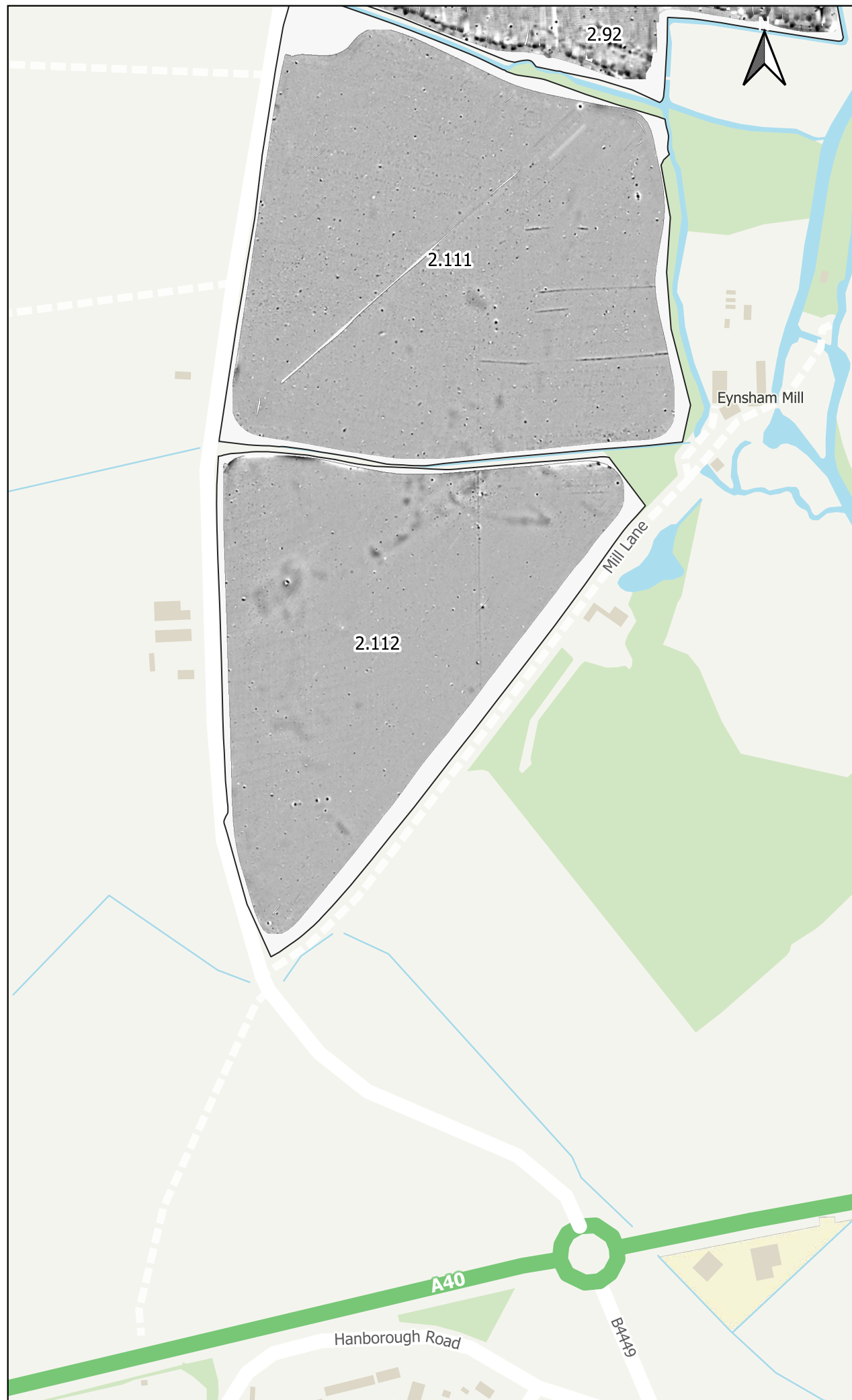


atlas geophysical
 Atlas Geophysical Ltd
 Garden House
 Heol Gledid
 1 Stradgynlais
 Powys
 SA9 1LQ
 01639 874 104
 info@atlasgeo.co.uk

Project:
 AG1803 Botely West

Client:
 Photovolt Development Partners GmbH

Project: AG1803	Sheet: Field 2.111
Date: November 2024	
Scale: 1 : 4000 @A3	



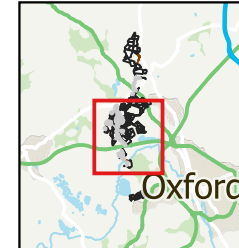
General Notes & Key

For this geophysical investigation, the fluxgate gradiometer array manufactured by Senoys (Germany) was used. The sensors were mounted on a wheeled frame approximately 0.25- 1.0 m apart with positional data provided by an RTK GNSS.

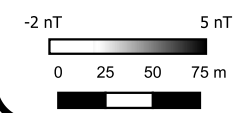
A small amount of post-acquisition processing is required to extract and visualise useful information from the acquired data. Once this is achieved successfully, the data are gridded and presented in this greyscale format.

Geophysical techniques are a measurement of material properties. Detecting and mapping the desired targets requires a measurable contrast between the target and the surrounding ground material. Interpretation of geophysical data should be carried out by qualified and experienced personnel but remains inherently subjective.

Overview map



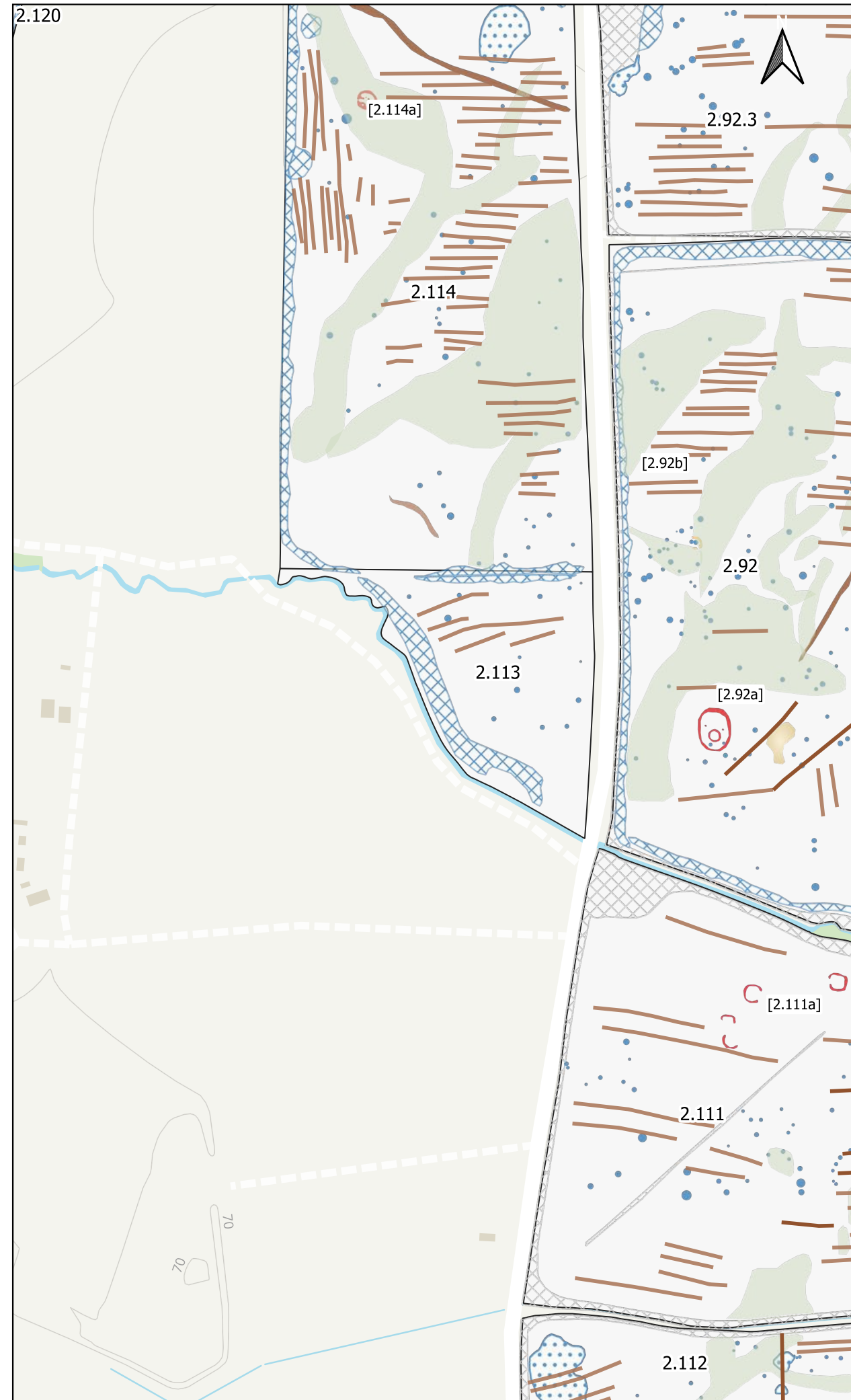
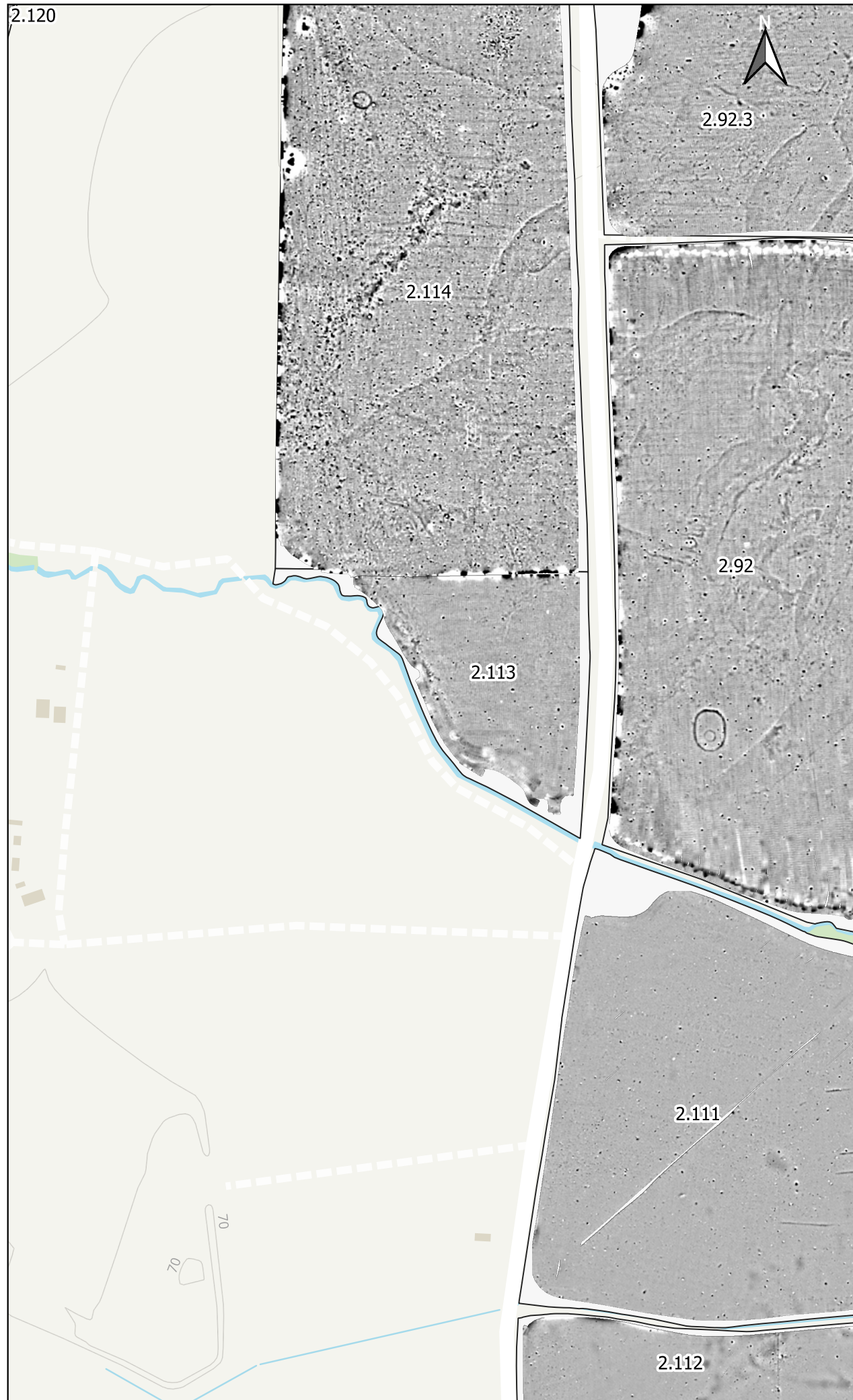
- Probable Archaeology
- Natural
- Ferrous Point
- Ferrous Spread
- Magnetic Interference
- Unable to Survey
- Agricultural (Strong)
- Agricultural (Weak)



atlas
geophysical
Atlas Geophysical Ltd
Garden House
Heol Gledid
Y Stradgynlais
Powys
SA9 1LQ
01639 874 104
info@atlasgeo.co.uk

Project:
AG1803 Botely West
Client:
Photovolt Development Partners GmbH

Project: AG1803	Sheet: Field 2.112
Date: November 2024	
Scale: 1 : 4000 @A3	



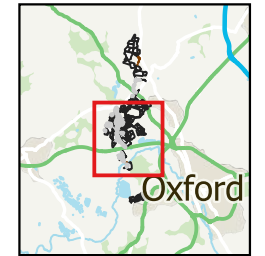
General Notes & Key

For this geophysical investigation, the fluxgate gradiometer array manufactured by Senoys (Germany) was used. The sensors were mounted on a wheeled frame approximately 0.25- 1.0 m apart with positional data provided by an RTK GNSS.

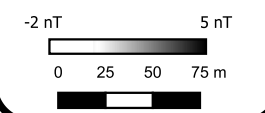
A small amount of post-acquisition processing is required to extract and visualise useful information from the acquired data. Once this is achieved successfully, the data are gridded and presented in this greyscale format.

Geophysical techniques are a measurement of material properties. Detecting and mapping the desired targets requires a measurable contrast between the target and the surrounding ground material. Interpretation of geophysical data should be carried out by qualified and experienced personnel but remains inherently subjective.

Overview map



- Probable Archaeology
- Possible Archaeology
- Natural
- Agricultural (Strong)
- Agricultural (Weak)
- Ferrous Point
- Ferrous Spread
- Magnetic Interference
- Extraction
- Unable to Survey
- Agricultural (Strong)
- Agricultural (Weak)

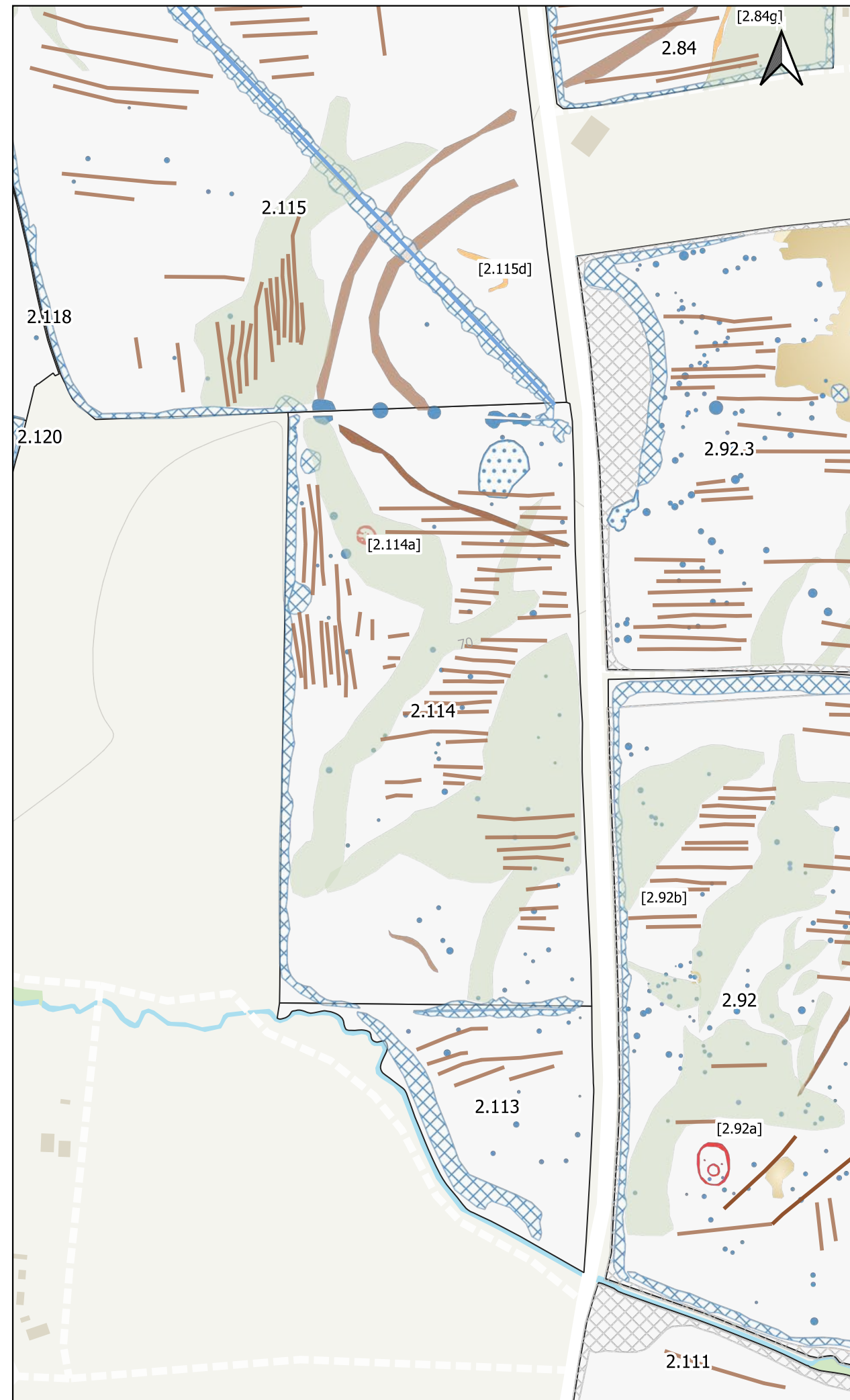


atlas geophysical
 Atlas Geophysical Ltd
 Garden House
 Heol Gledid
 Y Stradgynlais
 Powys
 SA9 1LQ
 01639 874 104
 info@atlasgeo.co.uk

Project:
 AG1803 Botely West

Client:
 Photovolt Development Partners GmbH

Project: AG1803	Sheet: Field 2.113
Date: November 2024	
Scale: 1 : 4000 @A3	



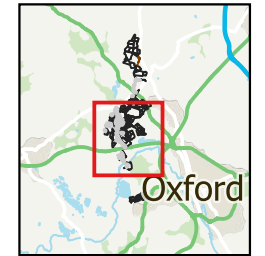
General Notes & Key

For this geophysical investigation, the fluxgate gradiometer array manufactured by Senys (Germany) was used. The sensors were mounted on a wheeled frame approximately 0.25- 1.0 m apart with positional data provided by an RTK GNSS.

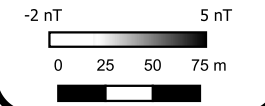
A small amount of post-acquisition processing is required to extract and visualise useful information from the acquired data. Once this is achieved successfully, the data are gridded and presented in this greyscale format.

Geophysical techniques are a measurement of material properties. Detecting and mapping the desired targets requires a measurable contrast between the target and the surrounding ground material. Interpretation of geophysical data should be carried out by qualified and experienced personnel but remains inherently subjective.

Overview map



- Probable Archaeology
- Possible Archaeology
- Natural
- Agricultural (Strong)
- Agricultural (Weak)
- Ferrous Point
- Ferrous Spread
- Magnetic Interference
- Extraction
- Unable to Survey
- Agricultural (Strong)
- Agricultural (Weak)
- Buried Utility



atlas geophysical
 Atlas Geophysical Ltd
 Garden House
 Heol Gledid
 1 Stradgynlais
 Powys
 SA9 1LQ
 01639 874 104
 info@atlasgeo.co.uk

Project:
 AG1803 Botely West

Client:
 Photovolt Development Partners GmbH

Project: AG1803	Sheet: Field 2.114
Date: November 2024	
Scale: 1 : 4000 @A3	



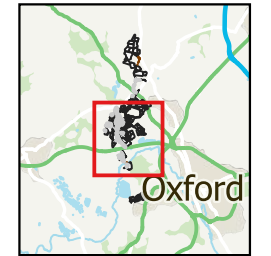
General Notes & Key

For this geophysical investigation, the fluigate gradiometer array manufactured by Senoys (Germany) was used. The sensors were mounted on a wheeled frame approximately 0.25- 1.0 m apart with positional data provided by an RTK GNSS.

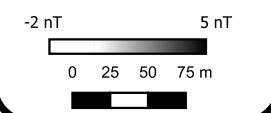
A small amount of post-acquisition processing is required to extract and visualise useful information from the acquired data. Once this is achieved successfully, the data are gridded and presented in this greyscale format.

Geophysical techniques are a measurement of material properties. Detecting and mapping the desired targets requires a measurable contrast between the target and the surrounding ground material. Interpretation of geophysical data should be carried out by qualified and experienced personnel but remains inherently subjective.

Overview map



- Probable Archaeology
- Possible Archaeology
- Natural
- Agricultural (Strong)
- Agricultural (Weak)
- Modern
- Ferrous Point
- Ferrous Spread
- Magnetic Interference
- Extraction
- Unable to Survey
- Agricultural (Weak)
- Possible land drain
- Buried Utility

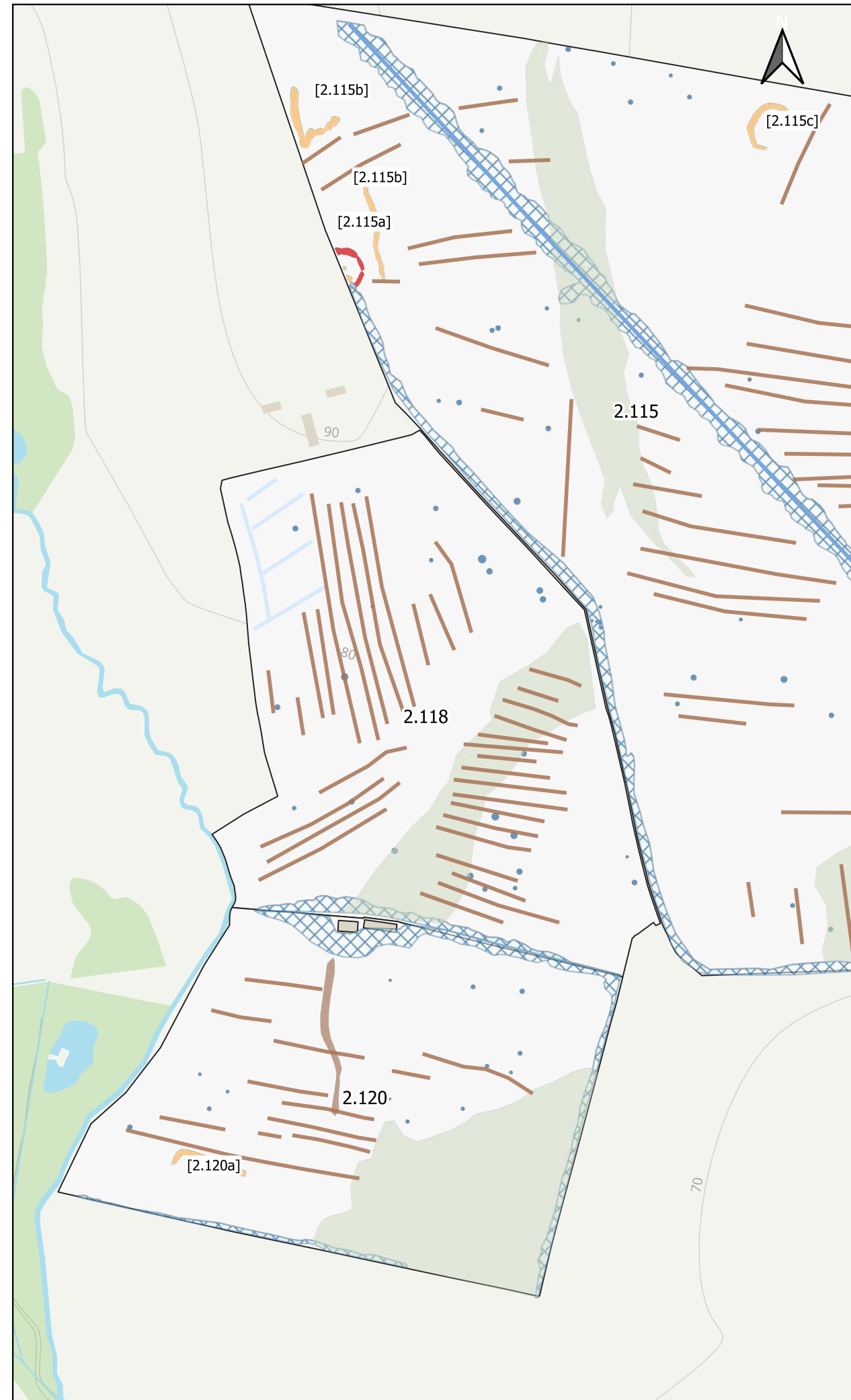
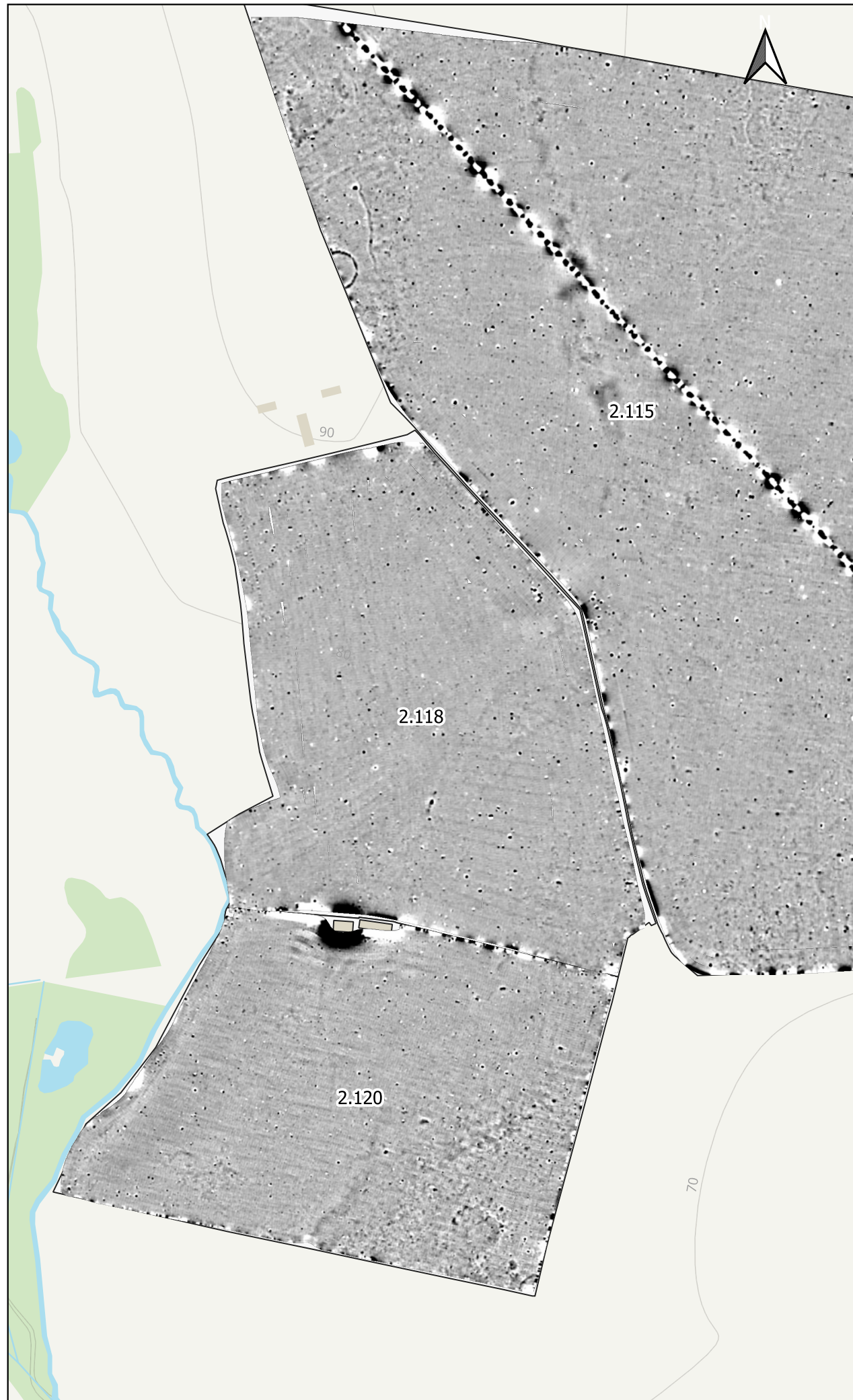


atlas geophysical
 Atlas Geophysical Ltd
 Garden House
 Heol Gledid
 Stradgynlais
 Powys
 SA9 1LQ
 01639 874 104
 info@atlasgeo.co.uk

Project:
 AG1803 Botely West

Client:
 Photovolt Development Partners GmbH

Project: AG1803	Sheet: Field 2.115
Date: November 2024	
Scale: 1 : 5000 @A3	



General Notes & Key

For this geophysical investigation, the fluxgate gradiometer array manufactured by Senoys (Germany) was used. The sensors were mounted on a wheeled frame approximately 0.25- 1.0 m apart with positional data provided by an RTK GNSS.

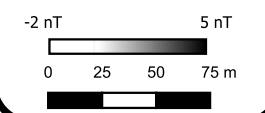
A small amount of post-acquisition processing is required to extract and visualise useful information from the acquired data. Once this is achieved successfully, the data are gridded and presented in this greyscale format.

Geophysical techniques are a measurement of material properties. Detecting and mapping the desired targets requires a measurable contrast between the target and the surrounding ground material. Interpretation of geophysical data should be carried out by qualified and experienced personnel but remains inherently subjective.

Overview map



- Probable Archaeology
- Possible Archaeology
- Natural
- Agricultural (Weak)
- Ferrous Point
- Magnetic Interference
- Agricultural (Weak)
- Possible land drain
- Buried Utility

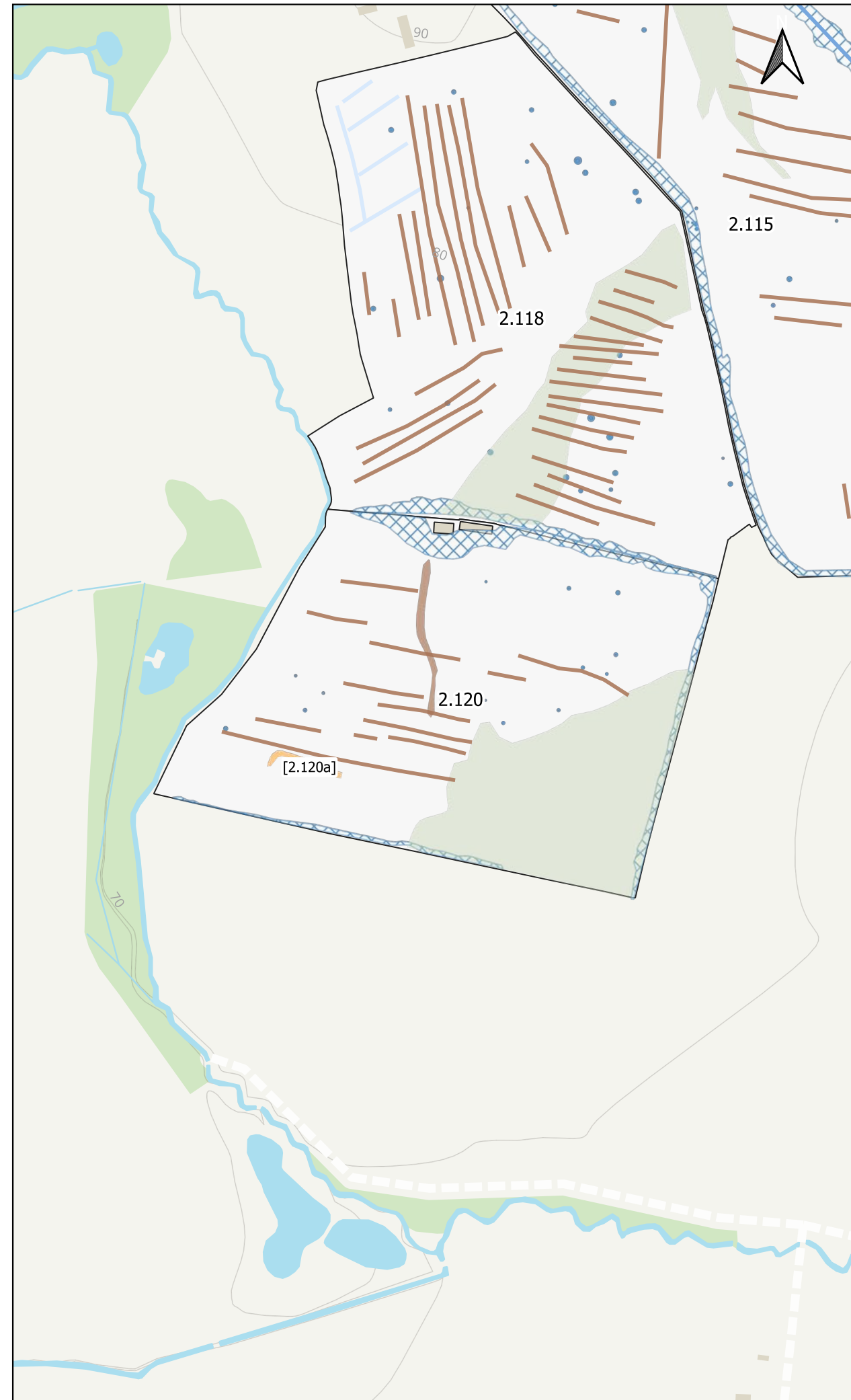


atlas geophysical
 Atlas Geophysical Ltd
 Garden House
 Heol Gledid
 Ystradgynlais
 Powys
 SA9 1LQ
 01639 874 104
 info@atlasgeo.co.uk

Project:
 AG1803 Botely West

Client:
 Photovolt Development Partners GmbH

Project: AG1803	Sheet: Field 2.118
Date: November 2024	
Scale: 1 : 3500 @A3	



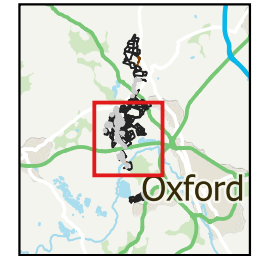
General Notes & Key

For this geophysical investigation, the fluxgate gradiometer array manufactured by Senoys (Germany) was used. The sensors were mounted on a wheeled frame approximately 0.25- 1.0 m apart with positional data provided by an RTK GNSS.

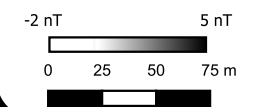
A small amount of post-acquisition processing is required to extract and visualise useful information from the acquired data. Once this is achieved successfully, the data are gridded and presented in this greyscales format.

Geophysical techniques are a measurement of material properties. Detecting and mapping the desired targets requires a measurable contrast between the target and the surrounding ground material. Interpretation of geophysical data should be carried out by qualified and experienced personnel but remains inherently subjective.

Overview map



- Possible Archaeology
- Natural
- Agricultural (Weak)
- Ferrous Point
- Magnetic Interference
- Agricultural (Weak)
- Possible land drain
- Buried Utility



atlas geophysical
 Atlas Geophysical Ltd
 Garden House
 Heol Gledid
 Ystradgynlais
 Powys
 SA9 1LQ
 01639 874 104
 info@atlasgeo.co.uk

Project:
 AG1803 Botely West

Client:
 Photovolt Development Partners GmbH

Project: AG1803	Sheet: Field 2.120
Date: November 2024	
Scale: 1 : 3500 @A3	